



2025

MEETING OF THE MINDS MENTAL HEALTH CONFERENCE Registration Packet

“Caring: It Starts With YOU”

Uniting Orange County's entire mental health community.
Something for **everyone**. Something for **you**.

FEATURES:

700+ attendees

Community Resource Fair featuring 50+ resources

28 Mental Health Workshops

Keynote Luncheon

Networking

4 Continuing Education Hours:

Ph.D., Psy.D., LMFT, LCSW, CMPSS, RN, CAADE



Friday, April 25, 2025

8:00 AM to 4:00 PM

Anaheim Marriott

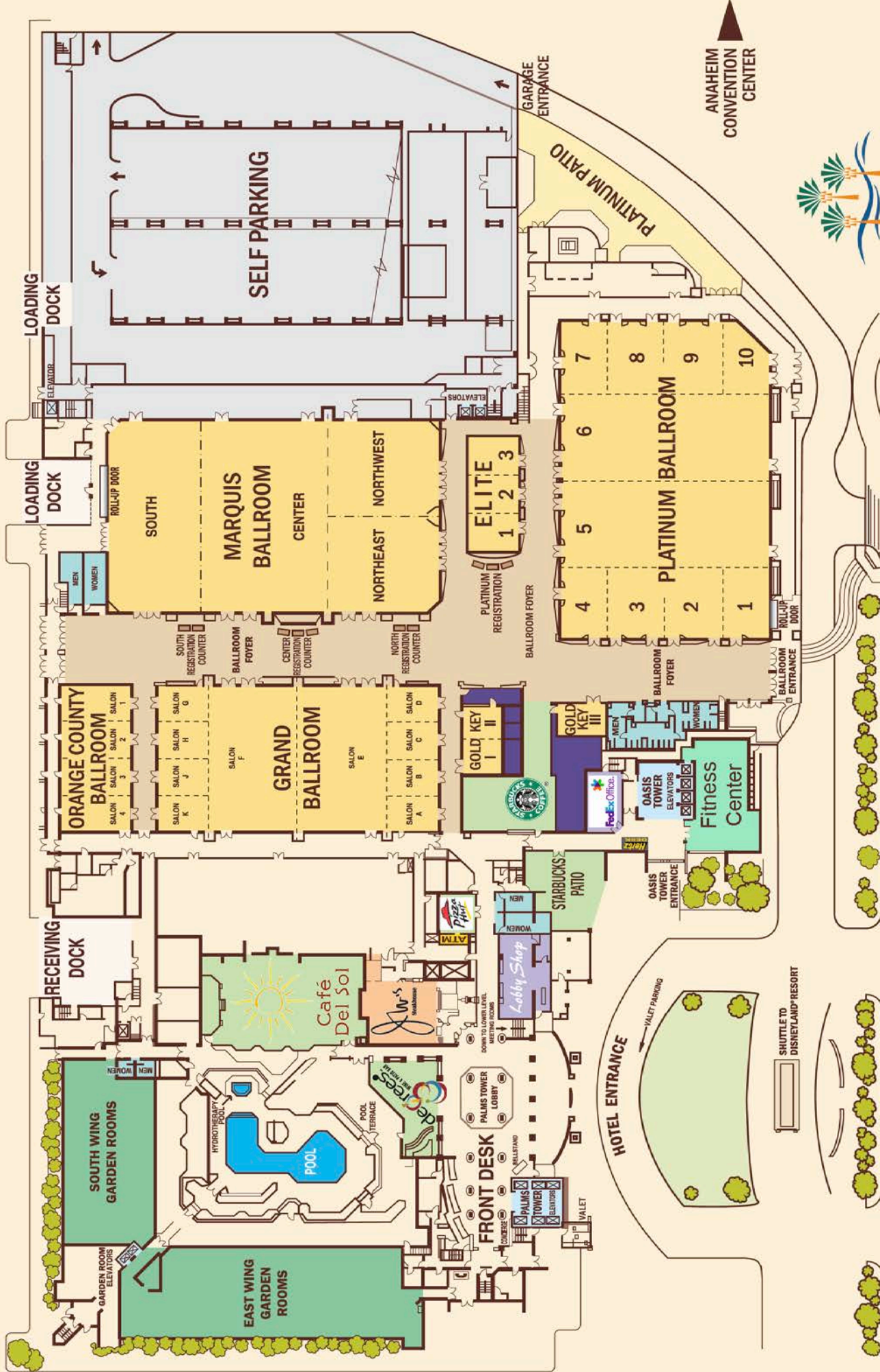
Free Parking

Who Should Attend:

Mental health and medical professionals, RNs, community agency staff, individuals with lived experience and their families, educators, faith leaders, volunteers, first responders, substance use counselors, residential care staff, community advocates, students, and anyone passionate about mental health!

To Register or to Sponsor: www.mhaoc.org/events

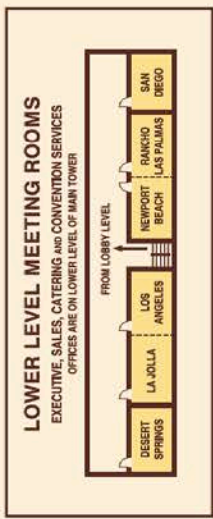
714-547-7559 1971 East 4th Street, Suite 130A Santa Ana, CA 92705



Marriott®

ANAHEIM

700 West Convention Way
 Anaheim CA 92802-3483
 714.750.8000
www.marriott.com/laxah



"CARING: It Starts with YOU"

31st Annual Meeting of the Minds Conference

Friday, April 25, 2025

Conference Schedule

7:00 A.M.	Exhibitor Registration
8:00 A.M.	General Registration Begins Continuing Education Sign-In Networking and Resource Fair
9:30 A.M. – 10:30 A.M.	Workshops 1 – 7
10:45 A.M. – 11:45 A.M.	Workshops 8 – 14
Noon – 1:45 P.M.	Networking Luncheon and Resource Fair
1:45 P.M. – 2:45 P.M.	Workshops 15 – 21
3:00 P.M. – 4:00 P.M.	Workshops 22 – 28
4:00 P.M. – 4:30 P.M.	Continuing Education Sign-Out



Interactive Luncheon Wellness Activity with Dr. Jaime G. Raygoza

Dr. Jaime G. Raygoza is a Career Development & Stress Management Coach who helps professionals transform their work lives through evidence-based psychology and innovative techniques. As the founder of Rainbow Career Coaching and a certified Laughter Yoga Teacher, he combines his PsyD in Human and Organizational Psychology with holistic approaches to help clients prevent burnout, master stress resilience, and thrive in their careers.

2025 Meeting of the Minds Planning Committee

Mindy Andrews John Henry Foundation	Carla DiCandida, MPA Ocean View Psychiatric Hosp.	Spot Myers Straight Talk Counseling	KC Pickering, Psy.D. OC Health Care Agency
Renee Bidwell MHA	Sohail Eftekhazadeh Wellness Center Central	Parisa Mehrinfar MHA	Pam Reed Presnall MHA
Lei Portugal-Calloway Telecare	Raul Fernandez Wellness Center South	Carol Nevarez Wellness Center West	Margaret Riley, MA Committee Chair
Helen Cameron Mental Health Advocate	Lori Fischer Telecare	Wenny Nguyen DiDi Hirsch	Michelle Tanner REI
Kevin Connors, LMFT Private Practice Clinician	Kathryn Hamel, Ph.D. Hamel Consulting	Rosemary Nielsen MHA Board	Christine Tran-Le Council on Aging OC

Workshops 1 – 7
9:30 am – 10:30 am

Workshop 1: Salon A/B

Laughter in the Workforce: An Innovative Approach to Burnout Prevention

This workshop explores the transformative power of laughter in the workplace, focusing on its role in preventing burnout, enhancing workplace culture, and promoting work-life integration. Participants will delve into the science behind laughter, understanding its physiological and psychological benefits, such as reducing stress, improving mood, and fostering resilience. The interactive format will include a brief Laughter Yoga session.

Presenter: Jaime G. Raygoza, Psy.D. Certified Laughter Yoga Leader

Workshop 2: Salon C/D

The Orange County Crisis Continuum of Care

This presentation will provide an overview of the three basic elements of the mental health crisis continuum of care in Orange County. The presenter will discuss the types of crisis programs available. Attendees will learn about the changes brought about due to the Mobile Crisis Benefit Medi-Cal transformation.

Presenter: Vanessa Thomas, Senior Manager, Orange County Health Care Agency

Workshop 3: Grand Ballroom – Salon E

New Horizons in Psychiatric Medications

In this workshop, the presenter will discuss new psychotropic medications and their uses in depressions, bipolar disorders, and schizophrenia. He will discuss the new medication mechanisms involving newly identified neurochemical systems in the brain. He will discuss possible benefits of these new psychopharmacologic agents and why they represent important advances in mental health care.

Presenter: Thomas Okamoto, M.D., Psychiatrist in Private Practice

Workshop 4: Grand Ballroom – Salon F

Understanding and Treating the Dangerous and Growing Epidemic of Sexualized Drug Use in Diverse Populations

This workshop outlines the explosive growth of sex, porn, amphetamines and other drugs which quickly hijack sexual arousal to unsustainable levels. Chemsex (patterns of behavior which were primarily focused on the MSM community) has expanded to diverse populations, which in turn has a direct impact on behavior. This workshop reviews treatment of Addiction Interaction Disorder as it pertains to new patterns of substance use and behaviors that may be less familiar to clinicians.

Presenters: Erin Snow, LMFT, CSAT and David Fawcett, Ph.D., CST, CSAT, Seeking Integrity Los Angeles

Workshop 5: Elite Ballroom

An Introduction to EMDR

This is an introductory course covering the basics components of EMDR Therapy, including its history, theories and efficacy. Participants will be introduced to the trauma-informed framework of this therapy and the variety of populations and diagnoses with which it can be used.

Presenter: Michelle Gottlieb, Psy.D., MFT, LPCC

Workshop 6: Salon G/H

Advancing the Peer Workforce Through Medi-Cal Peer Support Specialist Certification

During this workshop attendees will learn about Senate Bill (SB) 803 that is enabling California to expand the behavioral health workforce through certification of Peer Support Specialists. The presenters will provide an overview of the certification process and the benefits of becoming certified. They will explain areas of specializations, continuing education requirements, and workforce landscape.

Presenters: Michelle Tanner, Recovery Education Institute (REI) and two certified Medi-Cal Peer Support Specialists from REI

Workshop 7: Salon J/K

Psychiatric Advanced Directives

This session will review the use and benefits of psychiatric advance directives for clients, family members, and health care providers. It will provide an overview of the county's implementation plan, including the target population, pilot programs, and the role of Peer Specialists. Attendees will receive an outline of the standardized PAD template, including an example of a completed section for reference.

Presenters: Innovation Staff, Orange County Health Care Agency

Workshops 8 – 14
10:45 am – 11:45 am

Workshop 8: Salon A/B

Nutrition, Exercise and Mental Health

Bad habits are difficult to break, but it's not an impossible task. By understanding the brain circuitry on habits, it may make it easier to find ways to break unhealthy habits and develop new ones. The audience will learn more about the effects of psychotropic medications on their health and what they can do to keep themselves healthy.

Presenter: Charles Nguyen, M.D., Clinical Professor, University of California, Riverside

Workshop 9: Salon C/D

We're on the Same Side! Working WITH the Police When a Loved One Needs Help

Presenters will explain what family members should expect from a law enforcement response to a mental health crisis involving a loved one. They will discuss confirmation and negativity bias, including factors contributing to bias. They will discuss repeating patterns and themes relevant to experience and perceptions of police-citizen interactions. Attendees will learn how they can enhance their collaboration with the police in the best interest of their loved one.

Presenters: Dr. Raymond Griego and Dave Hill, NAMI Orange County

Workshop 10: Grand Ballroom – Salon E

What is Clinical High Risk for Psychosis? Strategies for Identification and Treatment

This training will begin with an overview of psychosis and psychosis-risk syndromes, followed by issues regarding assessment and intervention. It will include a primer on the use of the Structured Interview for Psychosis Risk Syndromes (SIPS) and the PRIME Screen. The training will also address topics around assessment best practices, existing screening instruments, misconceptions and stigma, psychosocial interventions, and other practical clinical considerations. An interactive exercise using a vignette will be incorporated in the presentation.

Presenter: Jason Shiffman, Ph.D., Thrive Together

Workshop 11: Grand Ballroom – Salon F

Opioid Overdose Prevention and Naloxone Training

This workshop will raise awareness of opioid misuse and fentanyl overdose deaths. The presenter will provide information about how fentanyl deaths are preventable and how to access available resources. Each participant will be trained on how to administer Naloxone and will receive a free box.

Presenter: Della Lisi Kerr, Orange County Health Care Agency

Workshop 12: Elite Ballroom

Navigating Cultural Diversity in Suicide Prevention: Tools and Techniques

This workshop explores the critical intersection of cultural competence and suicide prevention, aiming to equip participants with the knowledge and skills needed to effectively support individuals from diverse cultural backgrounds. Participants will delve into how cultural factors influence mental health perceptions, stigma, and help-seeking behaviors related to suicide. The workshop emphasizes the importance of understanding these cultural dynamics to enhance communication and intervention strategies.

Presenter: Sheriann A. Holder-France, Behavioral Support Specialist (BSS), Ballenger Creek Middle School

Workshop 13: Salon G/H

Peers in the Workforce

This workshop will be a panel discussion with Peer Support Specialists/Peer leaders from Wellness Center and Telecare responding to a set of questions. An Employment Specialist will discuss supporting peers with finding employment within Orange County

Presenters: Lei Portugal Calloway, and a panel of peers working in the mental health workforce

Workshop 14: Salon J/K

Policy Updates: Behavioral Health Transformation (Prop 1) and the Impacts on the Mental Health Services Act

In this workshop, attendees will learn about the changes authorized by the passage of Proposition 1, with emphasis on the transition of the Mental Health Services Act to the Behavioral Health Services Act. This will be a high-level overview of those changes and will highlight impacts these changes will have on the public behavioral health system.

Presenter: Michelle Smith, BHSA Senior Manager, Orange County Health Care Agency

Workshops 15 – 21

1:45 pm – 2:45 pm

Workshop 15: Salon A/B

Practical Application of Mindfulness

This introductory workshop is tailored for mental health professionals seeking to enhance their personal well-being and clinical practice through mindfulness. Participants will engage in experiential learning to understand and apply mindfulness techniques that foster stress reduction, improved emotional regulation, and overall well-being.

Presenter: Brian Ton, Illumination Institute

Workshop 16: Salon C/D

The Orange County Sheriff's Department's Response to those Living with Behavioral Health Conditions

This workshop will explain the behavioral health services provided in the Orange County jail system and upon release. The presenter will provide attendees with an overview of the training provided to all OCSD staff members and the role of the Behavioral Health Bureau. It will discuss call diversion and the department's collaboration with the OC Health Care Agency.

Presenter: Commander Nate Wilson, OC Sheriff's Department

Workshop 17: Grand Ballroom – Salon E

Dissociation and the Hidden Obstacle to Treatment

This presentation will explore how the chronically traumatized client utilizes dissociative defenses to modulate affect and control attachment crises and conflicts. Participants will be able to identify dissociative defenses, recognize the Complex PTSD symptoms, describe the interplay between these co-morbid conditions, utilize diagnostic tools to confirm the presence of dissociative and/or PTSD symptoms, and design treatment plans utilizing specific techniques to respond to these clients' needs.

Presenter: Kevin Connors, MS, LMFT, Clinician in Private Practice

Workshop 18: Grand Ballroom – Salon F

High Risk: Understanding the Relationship between Cannabis Use and Psychosis

This workshop will explore the dynamic relationship between cannabis use and the risk of psychosis, focusing on how evolving trends in cannabis potency, consumption methods, and accessibility impact mental health outcomes. Through case presentation and a literature review of recent research, participants will gain insight into key risk factors, including childhood trauma, genetic predisposition, and high-potency cannabis use.

Presenters: Daniel Cho, M.D., Carolyn Cookson, M.D., Gemma Espejo, M.D., Alexis Seegan, M.D., Orange County Psychiatric Society

Workshop 19: Elite Ballroom

Understanding and Managing Vicarious Trauma

Vicarious trauma can emerge as an invisible weight for those who care for others. This can be a significant issue for those who work with individuals experiencing trauma. This presentation will help attendees gain an understanding and effectively manage vicarious trauma while offering resilience and sustainable well-being in their professional and personal lives. This presentation will explore the impact of vicarious trauma, history, provide strategies to cope, and will highlight practical steps towards resilience.

Presenter: Sharon Volner, LMFT, Chief Clinical Officer, La Ventana Mental Health and Addiction Treatment Centers

Workshop 20: Salon G/H

Wellness Recovery Action Plan/WRAP

This workshop will provide an overview of the values and ethics of a Wellness Recovery Action Plan (WRAP). Attendees will learn how WRAP was developed and how WRAPs empower clients in recovery. Panelists will discuss the many positive outcomes individuals who complete WRAPs experience and will discuss how WRAPs improve the quality of life, increase hopefulness, increase self-advocacy, and reduce psychiatric symptoms, especially depression and anxiety.

Presenters: Alejandra Guevara, Raul Fernandez, Nelson Acosta and Adrian Carillo, Wellness Center South

Workshop 21: Salon J/K

Saving Lives Together: The Critical Role of Means Safety in Suicide Prevention

This presentation will provide an overview of the evidence-based approach of means safety in suicide prevention, emphasizing the shared responsibility of individuals, families, communities, and professionals. Participants will learn how reducing access to lethal means can significantly lower suicide rates and how to apply these strategies in everyday life and professional practice.

Presenters: Kevin Alexander, Orange County Health Care Agency, and a panel of community members with experience supporting vulnerable populations through work directly relating to suicide prevention and means safety.

Workshops 22 – 28

3:00 pm – 4:00 pm

Workshop 22: Salon A/B

YAY! For Mental Health: How Laughter and Stories Transform Emotional Wellness

This workshop will explore the use of entertainment and comedy as transformative tools within the field of mental health. Participants will learn how these mediums can help overcome stigma and foster community engagement. The presenter will delve into the power of storytelling in creating meaningful connections and enhancing discussion around mental health topics.

Presenter: Aidan Park, Founder, The Art of Being YAY!

Workshop 23: Salon C/D

Grand Jury Report: Law Enforcement's Response to Mental Health Calls for Service

This workshop will provide an overview of the findings in the Grand Jury's Report, will introduce the OCSD's innovative Behavioral Health Bureau, and provide an overview of Irvine's creative/collaborative Mental Health Unit. The Grand Jury's report will be available to those who request it.

Presenters: Captain Jason Ivins from the OC Sheriff's Department, Lt. Bill Bingham from the Irvine Police Department and three members of the 2023-2024OC Grand Jury: Margaret Riley, Lisa Winter, Shelley Tischler

Workshop 24: Grand Ballroom – Salon E

Somatic Therapy

Presenter will discuss how somatic-based techniques are designed to re-regulate deep-seated disturbances in arousal. Through the focal awareness of bodily sensation, individuals are able to slowly access the restorative physiological action patterns, allowing the highly aroused survival energies to be safely and gradually neutralized.

Presenter: William Sanchez, LMFT, Premier Family Counseling

Workshop 25: Grand Ballroom – Salon F

Eating Disorders: Understanding the Most Life-Threatening Mental Health Diagnoses

Attendees will learn about the diagnostic criteria for Anorexia, Bulimia and Binge Eating Disorder. Underlying causes for eating disorders will be discussed, best practices for treating eating disorders (including when a higher level of care than outpatient therapy/counseling), and how to develop treatment goals when working with eating disorder patients.

Presenter: Juli Agajanian, LMFT, CEDS-S, Center for Discovery

Workshop 26: Elite Ballroom

Neurocognitive Decline in Older Adults

Individuals with psychiatric disorders are at higher risk of neurocognitive disorders, but it can be very difficult to make the diagnosis of cognitive decline in this population. The workshop will review the psychiatric disorders that do increase the risk of neurocognitive disorders, strategies on how to distinguish between cognitive symptoms related to other psychiatric disorders, as well as preventive strategies that can be implemented to mitigate the increased risk.

Presenter: Michelle Park, M.D., Council on Aging

Workshop 27: Salon G/H

Cousins in Recovery

During this workshop, the two presenters, one who has lived with a mental health condition, and one who is in recovery from a substance use disorder, will discuss perspectives on recovery. The word recovery may mean something different to everyone, but its strength lies in its applicability in varying circumstances. All who subscribe to it have the same reliance on virtues like hope and the power of positivity. We all struggle and strive to find meaning in that struggle. By sharing their two stories, the presenters hope to demonstrate that recovery is universal.

Presenters: Daniel Gibbs and Matthew Gibbs

Workshop 28: Salon J/K

Lanterman-Petris-Short (LPS) and Probate Conservatorships

This presentation will describe the requirements for an LPS and Probate conservatorship. It will explain the referral and investigation process, the role the Public Guardian plays in investigations and administrations, and alternatives to conservatorship.

Presenters: David Sanchez, Public Guardian and Rosy Newell, Chief Deputy Public Guardian

mha Meeting of the Minds
April 25, 2025
Individual Registration (*Please type or print clearly*)

Name: _____ Title: _____

Address: _____

Phone: _____ Email: _____

The Small Print: Conference cancellations must be in writing and faxed or post-marked by April 1 to be eligible for a refund less a \$20 non-refundable processing fee. Cancellations after May 1st and no-shows, are not eligible for any refund or credit; and your tuition will be considered a tax-deductible donation to MHA. (IRS TAX ID # 95-2036972). Workshop admission is on space-available basis, so arrive early.

Registration deadline is April 14, 2025 No walk-ins will be accepted

Select One: The Sooner You Register, the More You Save!

Individual Registration: \$160 (through March 7) \$185 (March 8 – April 14)
Includes: admission to all workshops, showcase of community resources, catered networking luncheon, keynote presentation, validated parking

Senior Registration (Age 64+): \$120 (through March 7) \$135 (March 8 – April 14)
Includes everything under individual registration

Student Registration: \$100 (through March 7) \$115 (March 8 – April 14)
Includes everything under individual registration

Agency Sponsored Mental Health Consumer Attendance: \$75 (through March 7) \$90 (March 8 – April 14)
*If you are an agency and you are paying for a client to attend, you **must pay** this registration fee. No exceptions.*

Mental Health Consumer Registration: \$35 (through April 14)
By signing below, I am certifying that I am low income and requesting a discounted registration fee.

Signed: _____

Continuing Education Units: \$25 Please indicate type of credit you are requesting: _____
Five hours of continuing education for the following:
Ph.D., Psy.D., LMFT, LCSW, RN, CAADE for four contact hours*. *Pending Approval
*Attendees must **sign-in and sign-out** at CE table to meet criteria for certification.*

California MediCal Certified Peer Support Specialists are not charged for continuing education units. A certificate and listing of conference workshops will be provided at the end of the event.

OPTIONS:
Complimentary Luncheon: YES! I will attend the luncheon at no additional charge.

I am requesting a vegetarian meal

Business Card: \$50 per card (Submission Deadline: **April 7, 2025**)
Features publication of your business card in conference program that can be helpful in acquainting the Orange County Mental Health community with your practice of specialty. If possible, please submit by email as a **JPEG or PNG** file.
For larger advertisements in the program, see exhibitor/underwriter registration on next page.

Total amount enclosed payable to MHA \$ _____ *Please do not send cash*

Credit Card Authorization: _____ Visa _____ Mastercard _____ American Express

Credit Card #: _____ Expiration Date: _____

Print Name on Card: _____ Signature: _____

Credit Card Registration: *email* this registration form with credit card information to: presnall@mhaoc.org

Secure e-fax the registration form with credit authorization to: 714-242-9807

register online: www.mhaoc.org/events

Registration by Mail: *mail* registration form with payment to: MHA, 1971 E. 4th Street, Suite 130A, Santa Ana, CA 92705

Call 714-547-7559 with any questions

Meeting of the Minds, April 25, 2025

Exhibitor/Sponsor Registration

Exhibitor/Underwriter Name: _____

Address: _____ City: _____ State: ____ Zipcode: _____

Telephone: _____ Email: _____

Names of Attendees: _____

All Exhibitor/Sponsor Registrations include:

Exhibit space at Showcase of Community Resources (6 ft. table, 2 chairs), organization name placard, recognition in program, and listed on recognition board at the event. Admission for number of persons specified below, including all workshops, catered networking luncheon, keynote presentation, validated parking, and CEU processing fees.

Please check appropriate box for your level of support:

- \$25,000 **Keynote Sponsor:** Featured as chief sponsor in event program and in all media for the event. Program acknowledgement on front cover and full-page inside. Noted on MHA web site through 2025. Preferred booth location in high-traffic corridor. Admission and preferred luncheon seating for 20. Two rooms at the hotel the night before the conference. *Tax deductible amount is \$22,000.*
- \$10,000 **Titanium Sponsor:** Featured as chief sponsor in event program and in all media for the event. Program acknowledgement on front cover and full-page inside. Noted on MHA web site through 2025. Preferred booth location in high-traffic corridor. Admission and preferred luncheon seating for 20. One room at the hotel the night before the conference. *Tax deductible amount is \$7,300.*
- \$5,000 **Platinum Sponsor:** Featured as chief sponsor in event program and in all media for the event. Program acknowledgement on front cover and full page inside. Noted on MHA web site through 2025. Admission for 12. *Tax deductible amount is \$3,560.*
- \$2,500 **Gold Sponsor:** Featured as supporting sponsor in event program and in all media for the event. Program acknowledgement on front cover and half-page inside. Noted on MHA web site through 2025. Admission for 8. *Tax deductible amount is \$1,540.*
- \$1,200 **Silver Sponsor:** Featured as supporting sponsor in event program and in all media for the event. Program acknowledgement on quarter page inside. Noted on MHA web site through 2025. Admission for 5. *Tax deductible amount is \$600.*
- \$600 **Bronze Sponsor:** Featured as supporting sponsor in event program and in all media for the event. Program acknowledgement on business card size ad. Noted on MHA website through 2025. Admission for 3. *Tax deductible amount is \$240.*
- \$400 **Friend:** Includes supporting sponsor recognition in program plus admission for 2. *Tax deductible amount is \$160.*
- \$300 **Non-Profit Exhibitor:** Admission for 2.

Number of persons who will attend the luncheon: _____ Number of Vegetarian meals: ____ (circle names above)

EXHIBITOR REGISTRATION DEADLINE: Friday, April 11, 2025

Program Acknowledgements:

Digital artwork must be submitted to MHA as a **JPEG or PNG** file by **April 11, 2025**. **No PDFs please.** Email to Presnall@mhaoc.org

Additional/Optional Program Acknowledgement Space, to publicize your agency services or business and to support this conference:

_____ **\$500 Full page** (8"x10½") _____ **\$250 Half page** (4"x10½") _____ **\$125 Quarter page** (4"x5¼") _____ **\$50 Business Card** (3"x2½")

\$ _____ **Total amount enclosed, payable to MHA.** *Please do not send cash.*

Credit Card Authorization: _____ Visa _____ Mastercard _____ American Express

Credit Card # _____ Expiration Date _____

Print Name on Card _____ Authorized Signature _____

- Mail form and check to MHA, 1971 E. 4th Street, Suite 130A, Santa Ana, CA 92705
- Email form with credit authorization to presnall@mhaoc.org
- Fax form (secure E-fax) with credit authorization to 714-242-9807

MHA thanks our 2024 Meeting of the Minds Conference sponsors for their generosity and participation

Showcase of Community Resources

(partial listing of 2024 sponsors and exhibitors)

Chief Sponsor

Orange County Health Care Agency

Platinum

Kaiser Permanente

Gold

Be Well Orange County
CalOptima Health
College Community Services
Jamboree Housing Corporation
Syrentis Clinical Research

Silver

California Institute for Behavioral Health Solutions
College Hospital
Find Your Anchor
J&J Innovative Medicine

Psynergy Programs, Inc.
Telecare Corporation
Wellness Center West

Bronze

Casa de la Familia
Cyti Psychological
D'Amore Healthcare
Hoarder Homes

Mental Health Association
for Chinese Communities
National Alliance on Mental Illness – OC
Ocean View Psychiatric Hospital
The Purpose of Recovery

Friend

Depression and Bipolar Support Alliance – OC
Lightfully Behavioral Health
Rume Medical Group
The Healing Arts Gallery
Velocity Clinical Research

Nonprofit Exhibitors

2-1-1 Orange County
Access to Prevention, Advocacy,
Intervention & Treatment (APAIT)
Asian American Senior Citizens Service Center (AASCSC)
Behavioral Health Advisory Board
Behavioral Health Services
California Family Institute
Care Possible
Council on Aging-Orange County
Didi Hirsch Mental Health Services: Survivors Support Services
Goodwill Employment Works
Helping the Behaviorally Challenging Child
Illumination Institute
Lesli Mitchell Art
Minding Your Mind

Norooz Clinic
Multi-Ethnic Collaborative of Community Agencies (OC MECCA)
OC Public Defender
Olive Crest
OMID Institute
Phoenix House
Radiant Health Centers
Recovery Education Institute (REI)
Strong Families, Strong Children - Child Guidance Center
The Art of Being Yay!
The Priority Center
Thrive Together OC
Wellness Center Central
Wellness Center South

Meeting of the Minds Artist/Writer Art Show Application
 mha Meeting of the Minds Art Show, April 25, 2025 at Anaheim Marriott Hotel
 Open to mental health consumers in Orange County. Registration deadline is April 11, 2025

<i>Name</i>	<i>Organization</i>	<i>Telephone</i>	<i>Email</i>
-------------	---------------------	------------------	--------------

I AM ATTENDING

Please submit the following items if you are attending the Meeting of the Minds Conference:

1. MOM individual registration form checking "Mental Health Consumer Registration"
2. \$35.00 consumer registration fee for admittance to conference and luncheon.
Both of the above can be submitted: online at <https://mhaoc.org/events/> , mailed or delivered to: **Art Show Coordinator MHA, 1971 E. 4th Street, Suite 130 A Santa Ana, CA 92705**
3. Completed Artist/Writers Art Show application (this form) mailed or delivered

I AM UNABLE TO ATTEND

If you are unable to attend the conference and luncheon and wish to have your art or writing displayed at no fee please fill out this form and arrange to have your artwork or writing mailed or delivered to: **Art Show Coordinator MHA, 1971 E. 4th Street, Suite 130 A Santa Ana, CA 92705**

You can also have a representative bring your artwork or writing to the conference. Remember if that person is choosing to attend, they must pay a registration fee. Please fill out the following information about your representative:

<i>Name (Representative)</i>	<i>Organization</i>	<i>Telephone</i>	<i>Ext.</i>	<i>Email</i>
------------------------------	---------------------	------------------	-------------	--------------

Category I (not limited to) Paintings & Drawings (all media) - Prints (Woodcut, Lithograph etc.)
ART: Mixed Media - Graphic Designs-Photography - Prints of Your Original Work

<i>Title</i>	<i>Media</i>	<i>Media Surface</i>	<i>Height x Width</i>	Framed/Wired <input type="checkbox"/>
--------------	--------------	----------------------	-----------------------	--

Category II Hanging Artisans Crafts: (not limited to) hanging wood, glass & paper art, jewelry, needle work

yes no **Hanging Artisans Crafts: Craft will be Framed or in a Shadow Box (Wired And ready to hang)**

<i>Title(s) if appropriate</i>	<i>Process and/or Materials Used</i>	<i>(required) Height x Width x Depth</i>
--------------------------------	--------------------------------------	--

Category III WRITING:(not limited to) poetry, inspirational, life story, remembrances, song verse
Unlimited Number of Words on One 8½" by 11" Sheet Of Paper (Suggested 14-18 Font)

<i>Title(s)</i>

My Artwork may be used for mha MOM Flyers Art Show Visual Displays Virtual Web Shows

PLEASE NOTE: All artwork and writings must be **ready to hang** on a gridwall. Artwork should have a hook or wire to hang off of and writings must be in a frame with a backing that can be hung. You are responsible for your artwork. If concerned about theft or damage, make arrangements for you or someone to stay with your artwork when it is on display. (2) Marriott and the organizers or persons associated with "Meeting of the Minds" are not responsible for any theft or damage to your work. (3) You and/or your representative are responsible for all Artwork that is offered for sale including but not limited to setup, pricing, sales and all monies/receipts. Setup Time for your art is 7 a.m. to 8 a.m. on April 25, 2025.

Anaheim Marriott Hotel 700 West Convention Way, Anaheim (off Harbor between Chapman & Katella) Any questions about registration or if you need assistance please email: Lori Fischer loriefischer@outlook.com